

S2000



Free Flowing Individual Throttle Bodies
Coming soon



Free Adjusting camgears
36,000yen × 2



Up Rate Valve Springs 36,000yen
Can be used up to 13mm of lift



High Power Profile Piston 108,000yen
(size $\phi 87.00/87.50\text{mm}$) $\xi = 12.1:1$



Big Throttle kit: $\phi 70\text{mm}$ -taper- $\phi 65\text{mm}$ valve
(100/110/120) 50,000yen
(130) 50,000yen



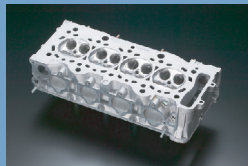
High Power Profile Camshaft with Vtec
Spec A2 IN EX each 58,000yen



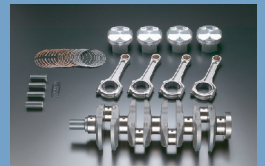
High Power Profile Camshaft without Vtec
Vtec Killer Cam IN EX each 58,000yen
Excludes collars & plugs



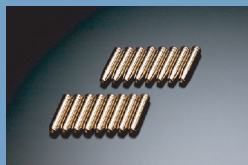
2200cc Stroker kit type-G 340,000yen
Bore(87.00 or 87.50mm) × Stroke 90.7mm
 $\xi = 12.1:1$



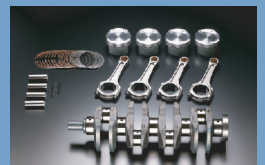
Cylinder Head Tuning fee 200,000yen~



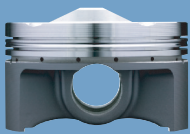
2200cc Stroker kit type-I 430,000yen
Bore(87.00 or 87.50mm) × Stroke 90.7mm
 $\xi = 12.1:1$



SPL Valve guide IN 2,500yen
EX 2,500yen



2200cc Stroker kit for Turbo 450,000yen
Bore(87.00 or 87.50mm) × Stroke 90.7mm
 $\xi = 8.75:1$



1/1000秒への挑戦

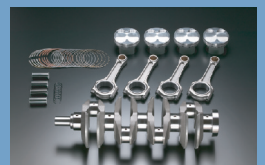
Ride of Dreams

TODA S2000 tuning gear

CAMSHAFT
PISTON
SPORTS INJECTION
FLYWHEEL
RACING GEAR BOX
EXHAUST MANIFOLD
FIGHTEX DAMPER
TUNING SERVICE



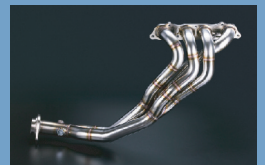
Chromium molybdenum steel Flywheel
46,000yen



2400cc Stroker kit type-I 830,000yen
Bore(87.00 or 87.50mm) × Stroke 100mm
 $\xi = 12.1:1$



Chromium molybdenum steel Flywheel
High Power Single Clutch kit 119,800yen



Exhaust Manifold (4-2-1 SUS type) 98,000yen



FIGHTEX damper Type DA 254,000yen
F-10k+helper R-10k



FIGHTEX damper Type EX 368,000yen
F-12k+helper R-12k



Dry Sump System kit 1,000,000yen



Catalyst Adapter $\phi 60\text{mm}$ 98,000yen



High Power Muffler system
 $\phi 60\text{mm} + \phi 50\text{mm} \times 2 + \text{Titanium Tail } \phi 90\text{mm}$
120,000yen (100/110/120)

FIGHTEX
Real sports damper

TODA
RACING
Motor Power Creator.

株式会社 戸田レーシング
〒713-8102 岡山県倉敷市玉島1363
TEL 086-526-2758 / FAX 086-525-5396
<http://www.toda-racing.co.jp/>